

The background of the slide is a vibrant red color with a pattern of vertical, wavy lines that resemble the folds of heavy stage curtains. The lighting is slightly darker in the center, creating a sense of depth and focus on the text.

Taking Center Stage & WMS

Single Site Plan

4 Essential Components

- Academic Excellence
- Developmental Responsiveness
- Social Equity
- Organizational Structures and Processes





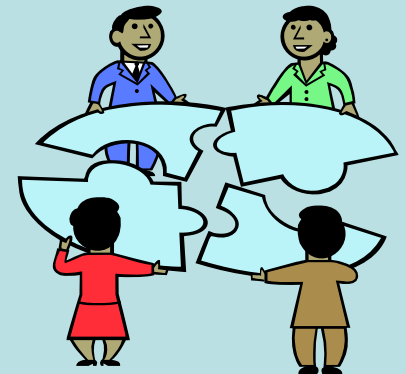
Academic Excellence



- ***Rigor*** - use researched processes to make sure each student succeeds
- ***Instruction, Assessment and Intervention*** - engage students, critical thinking, differentiated instruction, and use data on individuals to determine acceleration or intervention
- ***Time*** - flex schedules and collaborate

Developmental Responsiveness

- ***Relevance*** - real world connections, VAPA, service learning, socially relevant
- ***Relationships*** - close relationships for accountability and engagement. Frequent contact with an adult - for teachers too!
- ***Transitions*** - vertical articulation



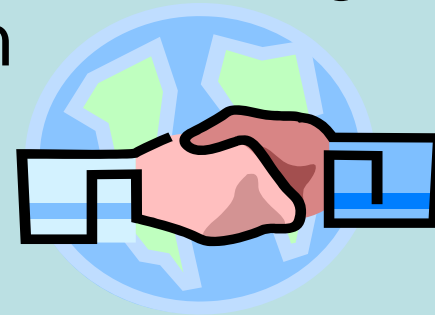


Social Equity

- **Access - rich learning environments; such as, sports, interventions, enrichment activities, leadership, heterogeneous classes when possible**
- ***Safety Resilience and Health - Life Skills, counselors, positive discipline, mentors (AVID)***

Organizational Structures and Processes

- ***Leadership*** - distributed leadership, collaborative decision making, regular data analysis
- ***Professional Learning*** - training (SIM/CE), coaching, on-going, collaboration
- ***Accountability*** - behavioral expectations for all students (teacher agreements), frequent assessment
- ***Partnerships*** - families, businesses, higher education, vertical articulation



So what does TCSii have to do with the SSP?

Academic Excellence

SIM- coaching and PD \$18,000

Title I/Reform Coach \$80,000

AVID \$4,000

ELD Paraprofessionals \$50,000

Developmental Responsiveness

0.5 Additional Counselor \$35,000

0.4 Psych Intern \$6,000

0.4 Counselor Intern \$0

Social Equity

Classroom materials \$10,000

Student clubs \$6,250

Organizational Support and Processes

Technology stipends \$3,000

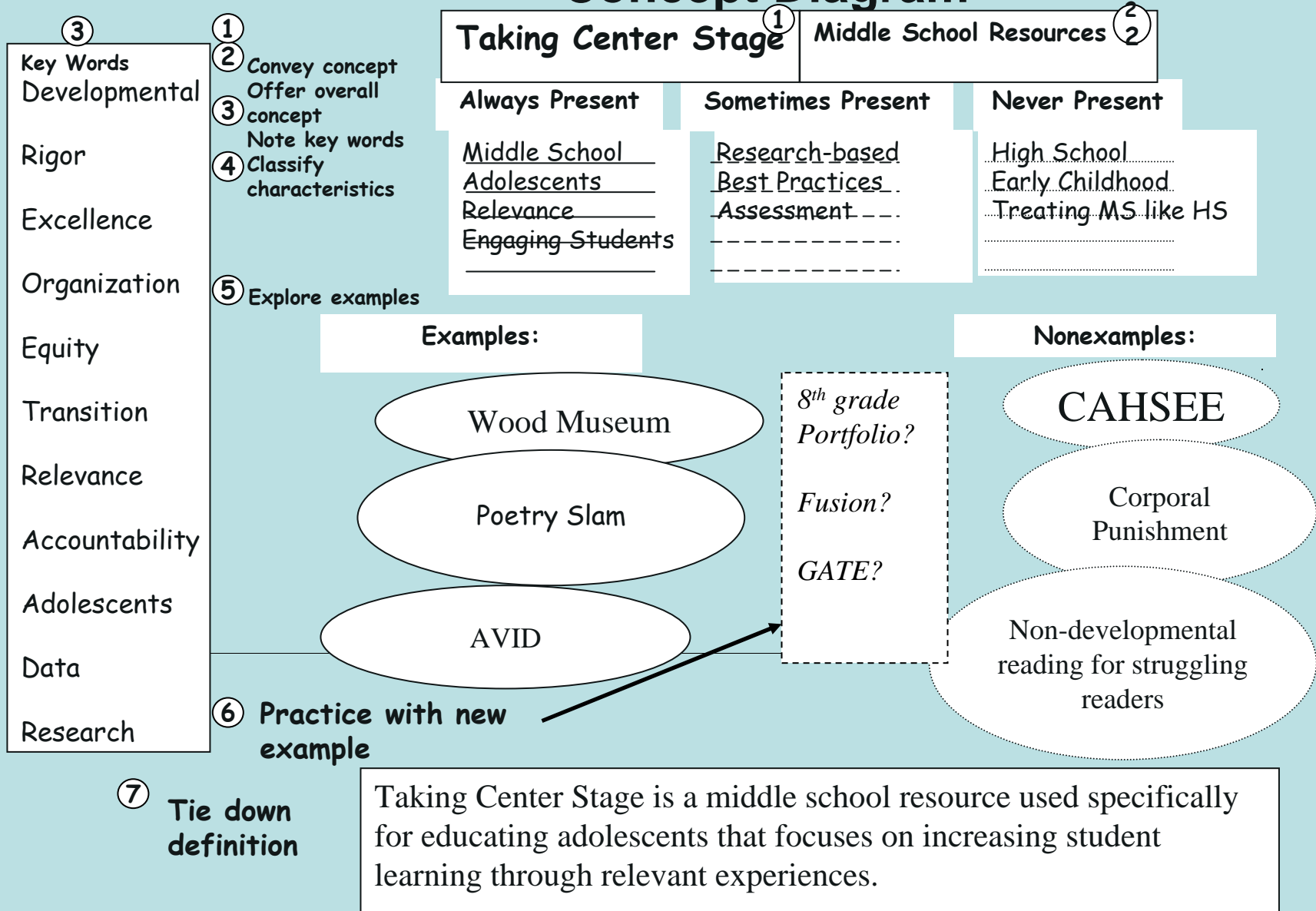
Collaborative Day PD

Self Study Survey

SOOOOOOO this leads us to.....



Concept Diagram



The Finale...or the Beginning?

