
ENGLISH LANGUAGE LEARNERS

State Student Achievement Data

December 15, 2009

Demographic Information

Currently, AUSD has 2,280 ELLs:

23% of our student population

1,241 in elementary school

407 in middle school

616 in high school

16 in other settings (ACLC & SpEd out of district)

Demographic Info (continued)

Since July 1, 2009:

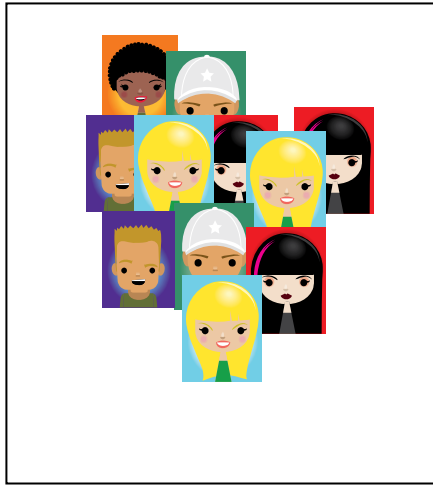
1,907 Annual CELDT Assessments

687 Initial (new student) Assessments

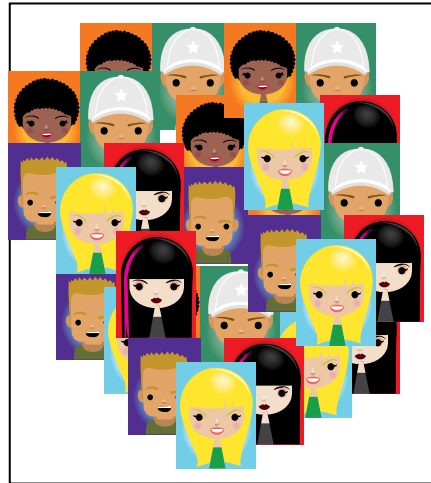
TOTAL: 2,594 CELDT tests administered in 4 months

*NOTE: 25% of each Gr. 2-12 test must be given 1-on-1.
100% of each K-1 test must be given 1-on-1.*

Demographic Example



Level Ones
Year-Round
Arrivals

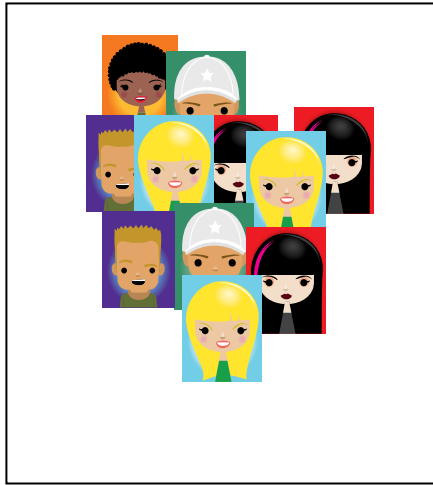


Level Twos, Threes, Fours
Steady Growth

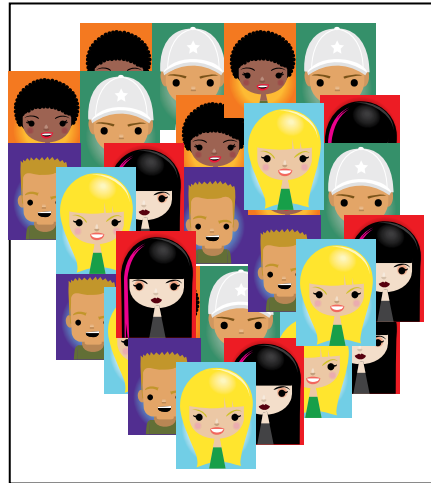


Level Fives
Exit of Top
Performers

Demographic Example



Level Ones
281 2007-08
243 2008-09



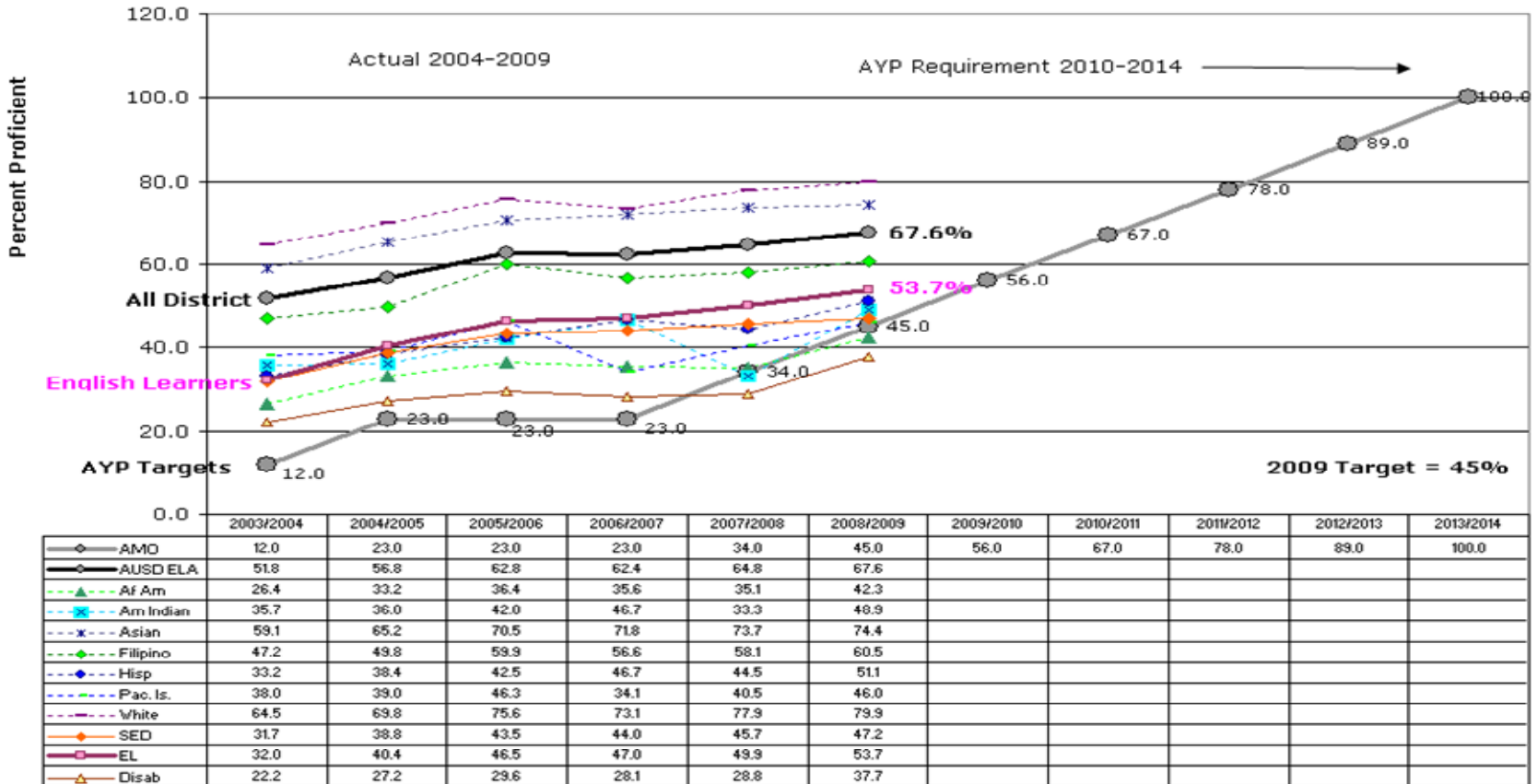
Level Twos, Threes, Fours
285, 588, 810 2007-08
225, 527, 817 2008-09



Level Fives
350 2007-08
615 2008-09

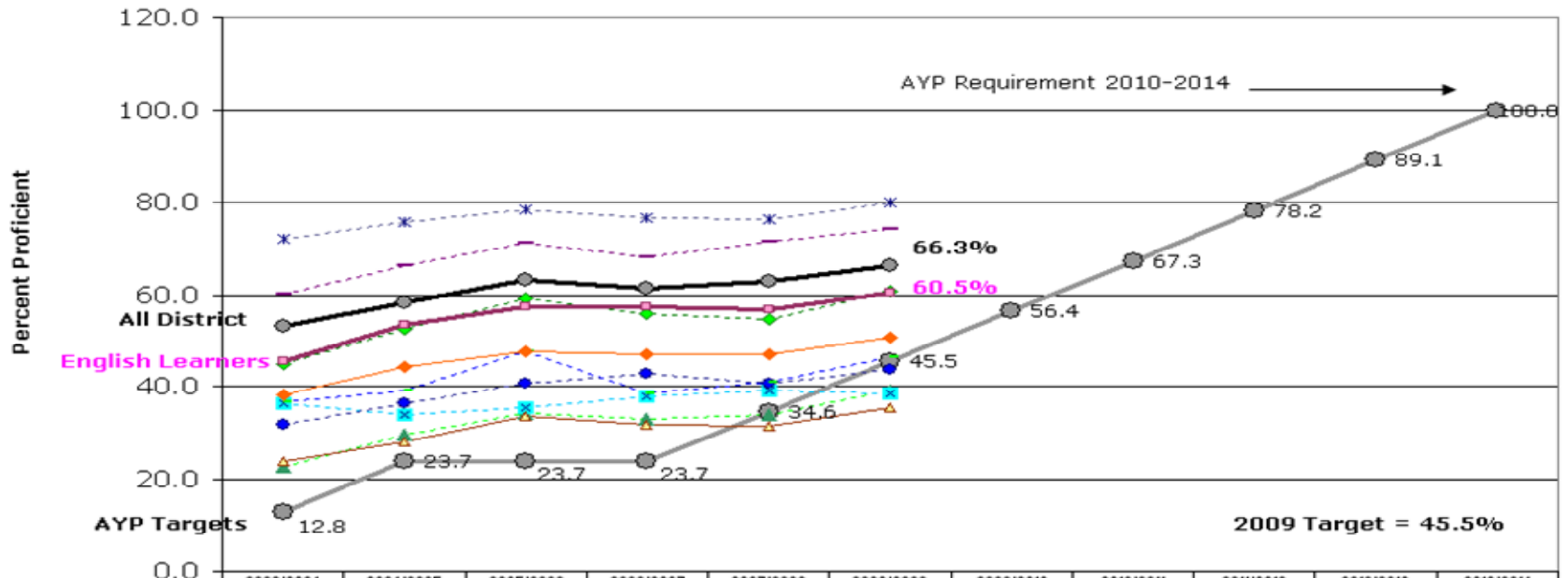
EL Performance: AYP in ELA

2009 Adequate Yearly Progress (AYP) in ELA
Toward Annual Measurable Objectives -- AUSD



EL Performance: AYP in Math

2009 Adequate Yearly Progress (AYP) in Math
Toward Annual Measurable Objectives -- AUSD



	2003/2004	2004/2005	2005/2006	2006/2007	2007/2008	2008/2009	2009/2010	2010/2011	2011/2012	2012/2013	2013/2014
AMO	12.8	23.7	23.7	23.7	34.6	45.5	56.4	67.3	78.2	89.1	100.0
AUSD Math	53.1	58.3	63.3	61.5	62.8	66.3					
Af Am	22.7	29.6	34.1	33.1	33.9	39.1					
Am Indian	36.3	34.0	35.4	37.8	39.1	38.6					
Asian	72.0	75.8	78.5	76.6	76.4	79.9					
Filipino	44.8	52.6	59.2	56.0	54.8	60.7					
Hisp	31.7	36.2	40.6	42.8	40.6	43.7					
Pac. Is.	36.6	39.0	47.5	38.6	41.0	46.5					
White	60.1	66.4	71.1	68.2	71.3	74.3					
SED	38.3	44.2	47.7	46.9	46.9	50.8					
EL	45.6	53.5	57.3	57.5	56.8	60.5					
Disab	23.9	28.1	33.7	31.9	31.4	35.3					

Languages & Redesignations

70 languages are spoken by ELLs in AUSD. (Among all AUSD students, a total of 81 languages are spoken.)

197 ELLs (8.4% of all ELLs) were redesignated to Fluent English Proficient in 2008-2009. Those redesignated among our 4 largest language groups were:

- 11.8% of our Cantonese speakers*
- 6.4% of our Spanish speakers*
- 9.9% of our Vietnamese speakers*
- 9.6% of our Tagalog speakers*

Local Conclusions

- ❑ *We have much to be proud of in the progress of our English Learners.*

- ❑ *We are exceeding all current state targets.*

- ❑ *We cannot relax with state AYP targets increasing so greatly each year.*
 - ❑ Goal 2009-2010: 2.5% increase for English Learners on the CST in ELA and Math

- ❑ *Our Spanish-speaking ELLs continue to need heightened instructional focus.*
 - ❑ Goal 2009-2010: 5% growth on CST in ELA and Math
3.2% increase in re-designation

Title III-Mandated Reporting

2008-2009 State Accountability Report

AMAO 1: ELLs Making Annual Progress

AMAO 2: % Attaining English Proficiency

AMAO 3: AYP for ELLs at the LEA Level

AMAO 1: Annual Progress

Percent of Students Making Annual Progress in Learning English

<i>Number of 2008 Annual CELDT Takers</i>	<i>1,936</i>
<i>Number/Percent with Required Prior Scores</i>	<i>1,922/99.3%</i>
<i>Number in Cohort Meeting Annual Growth Target</i>	<i>1,473</i>
<i>Percent Meeting AMAO 1 in LEA</i>	<i>76.6%</i>
<i>2008-09 Target</i>	<i>51.6%</i>
<i>State 2013-2014 Target</i>	<i>59%</i>
<i>Met Target for AMAO 1</i>	<i>Yes</i>
<i>Goal 2009-2010 Annual Progress across all levels</i>	<i>3.4% 80%</i>

AMAO 2: English Proficiency

Percent of Students Attaining English Proficiency on CELDT

Number of 2008 Annual CELDT Takers in Cohort **642**

Number in Cohort Attaining English Proficient Level
353

Percent Meeting AMAO 2 in LEA **55%**

2008-09 Target **30.6%**

State 2013-2014 Target **39%**

Met Target for AMAO 2 **Yes**

Goal 2009-2010 Target CELDT Levels 3-4 5% growth **60%**

AMAO 3: Adequate Yearly Progress

AYP for English Learners at the LEA Level

English-Language Arts

Met Participation Rate for English Learner Subgroup **Yes**

***Met Percent Proficient or Above
for English Learner Subgroup*** **Yes**

Mathematics

***Met Participation Rate
for English Learner Subgroup*** **Yes**

***Met Percent Proficient or Above
for English Learner Subgroup*** **Yes**

Met Target for AMAO 3 **Yes**

Statewide: Those Meeting AMAOs

Percent of LEAs/Consortia Meeting AMAOs in 2008-09

AMAO 1 – 82 percent

AMAO 2 – 81 percent

AMAO 3 – 37 percent

Met All Three AMAOs – 32 percent

AUSD: Met All Three AMAOs!

Source: October 1, 2009 CDE Accountability Update