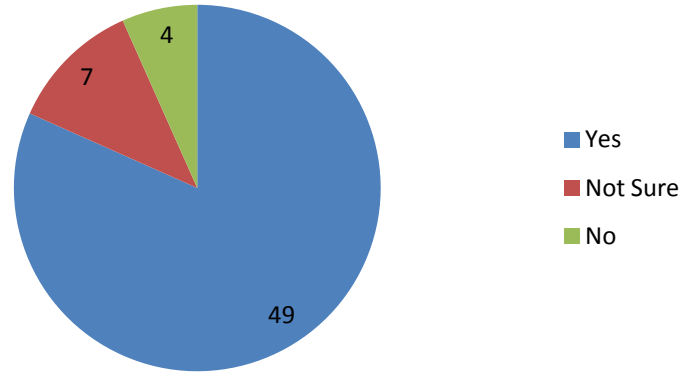
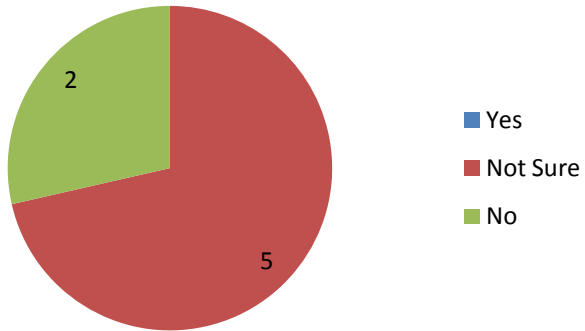


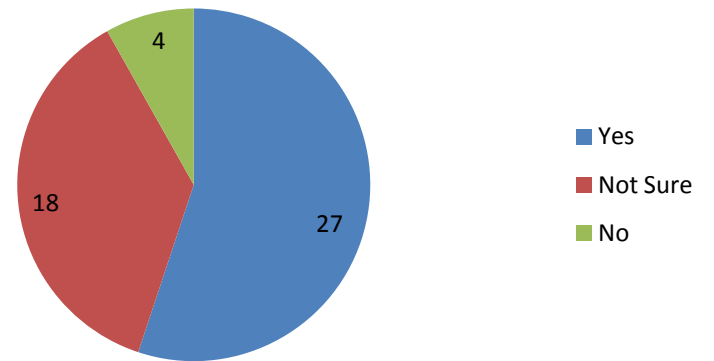
1.) Do you believe Alameda schools are in serious need of renovation and/or replacement?



2.) Do you believe a bond measure is the best way to begin to address the \$575 million identified in the Facilities Master Plan? (Not Sure Response to question 1.)

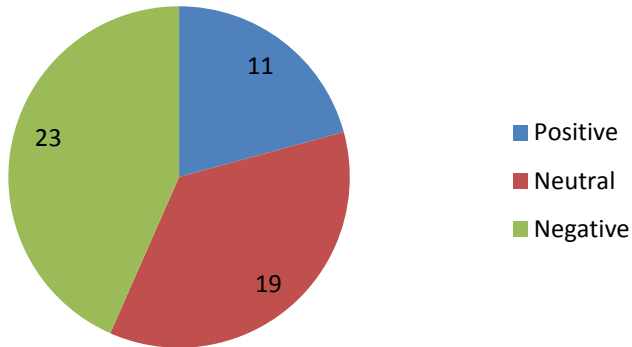


2.) Do you believe a bond measure is the best way to begin to address the \$575 million identified in the Facilities Master Plan? (Yes Response to question 1.)

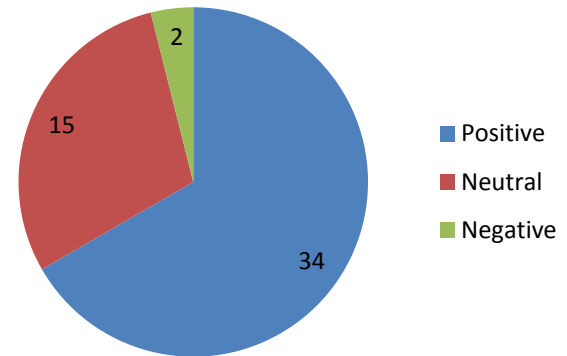


Strategy Preferences

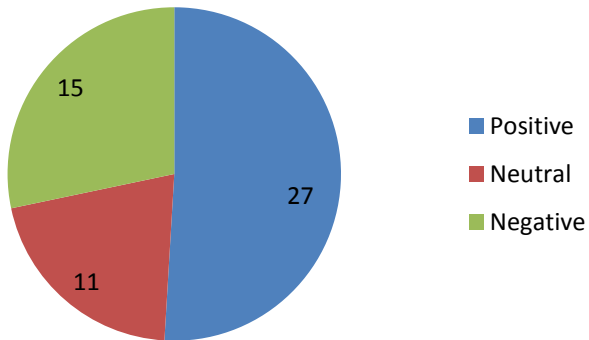
Something for Everyone



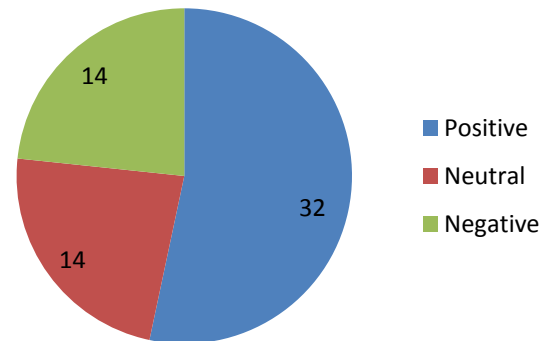
Thematic



Grade Level Grouping

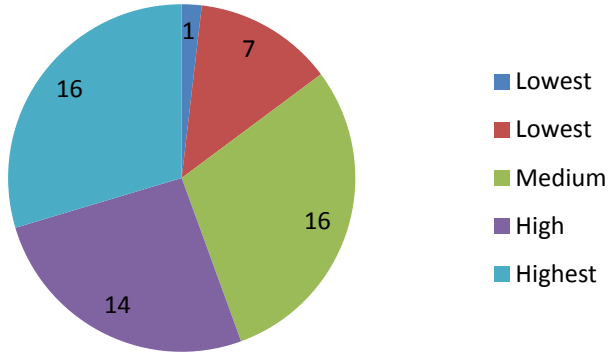


Hybrid

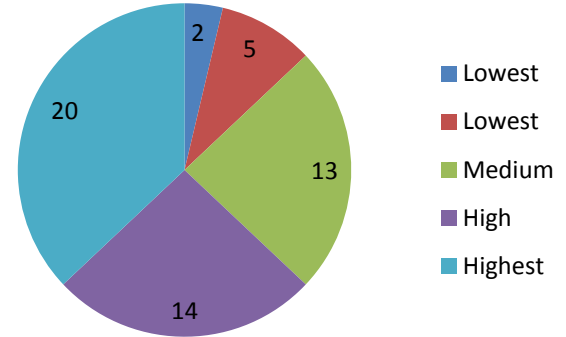


Priority Ranking

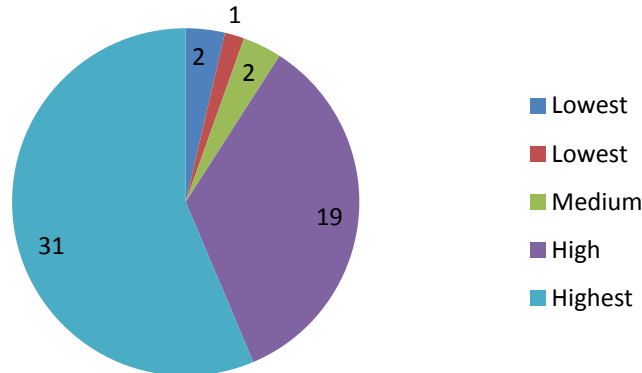
Classroom Safety



School site safety

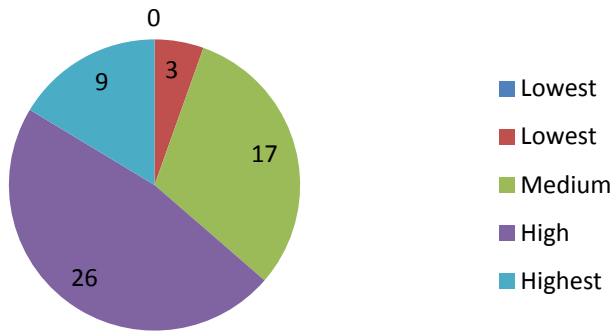


Classroom Educational Needs

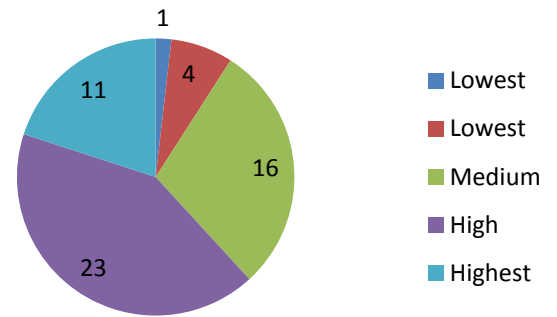


Priority Ranking

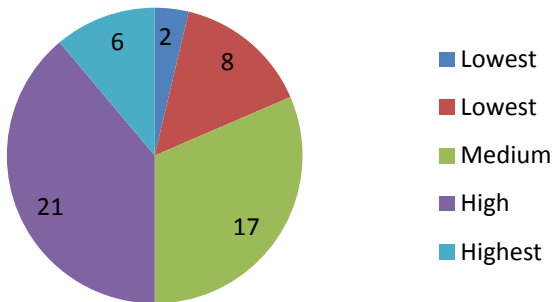
Building Infrastructure



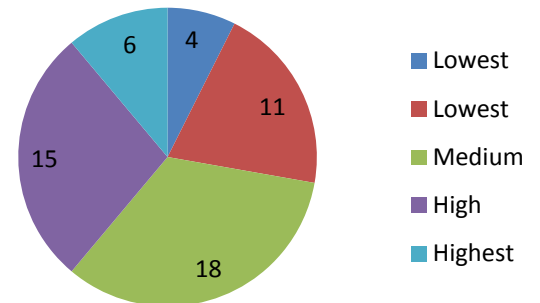
Technology Infrastructure



Student Growth

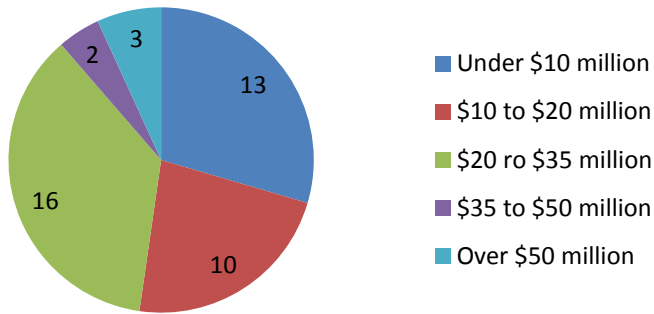


Energy Efficiencies

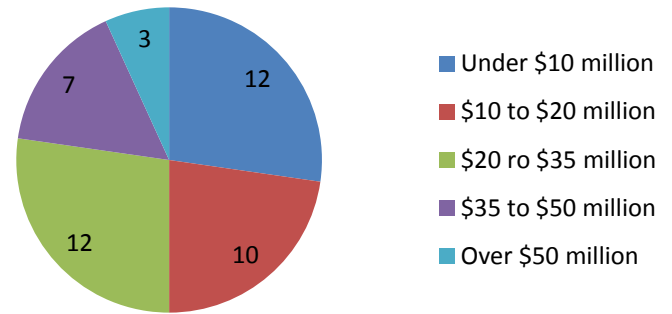


Dollar Ranking - Themes

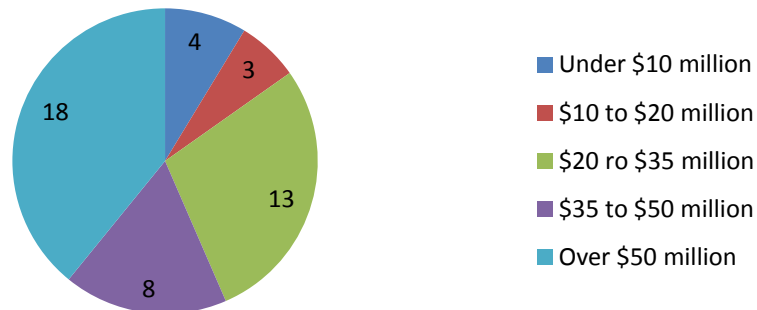
Classroom safety



School site safety

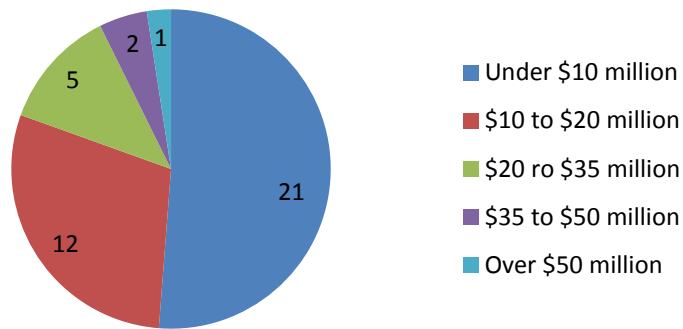


Classroom Educational Needs

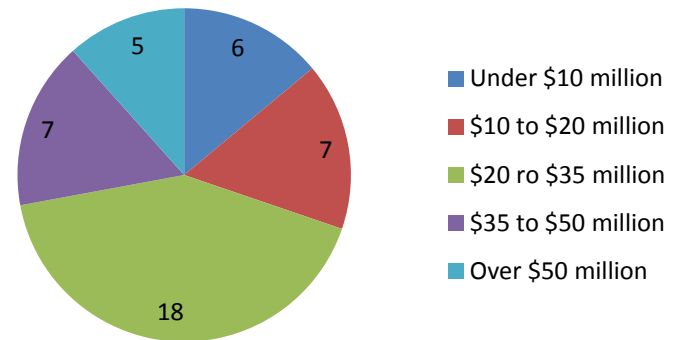


Dollar Ranking - Themes

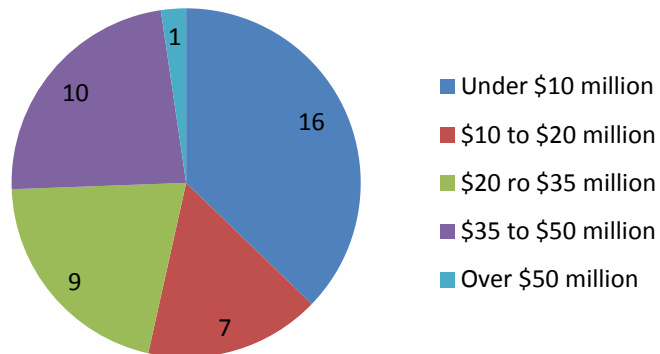
Solar Panel Installation



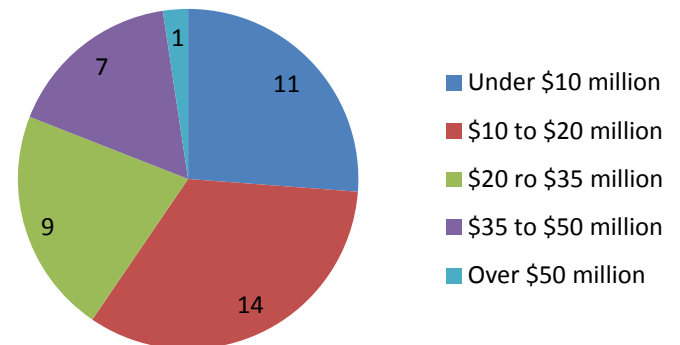
Technology improvements



Replace portables

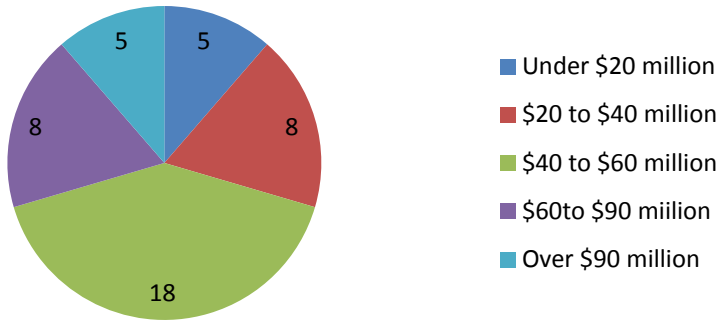


Student Growth

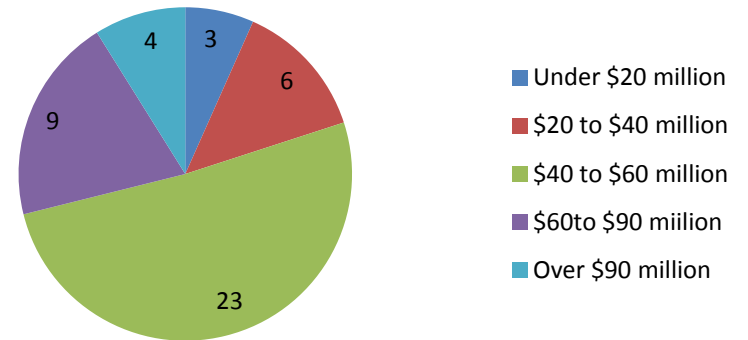


Dollar Ranking – Grade Levels

Elementary Schools



Middle Schools



High Schools

