

WELCOME TO LION COUNTRY

Lincoln Middle School





LINCOLN
MIDDLE SCHOOL



2008 5 8

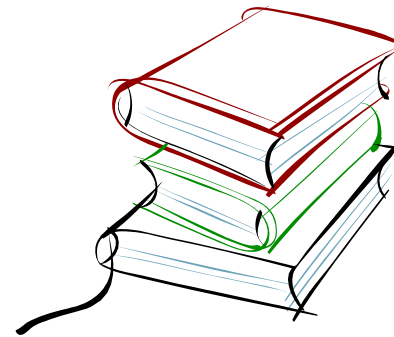
We Educate The Whole Child

Academics

- **6TH & 7TH Grade Core (3 periods)**
- ❖ English, Reading, Social Studies
- Math
- Science
- Physical Education
- Electives
- **8th Grade Core (2 Periods)**
- ❖ English & Social Studies
- ❖ 8th Graders have 2 electives

ELA at Lincoln Middle School

- A Comprehensive, Rigorous Program
- All ELA Classes include:
 - ❖ Literature
 - ❖ Critical Thinking
 - ❖ Writing
 - ❖ Vocabulary
 - ❖ Grammar
 - ❖ Punctuation
 - ❖ Spelling



6th Grade Art Docent Project



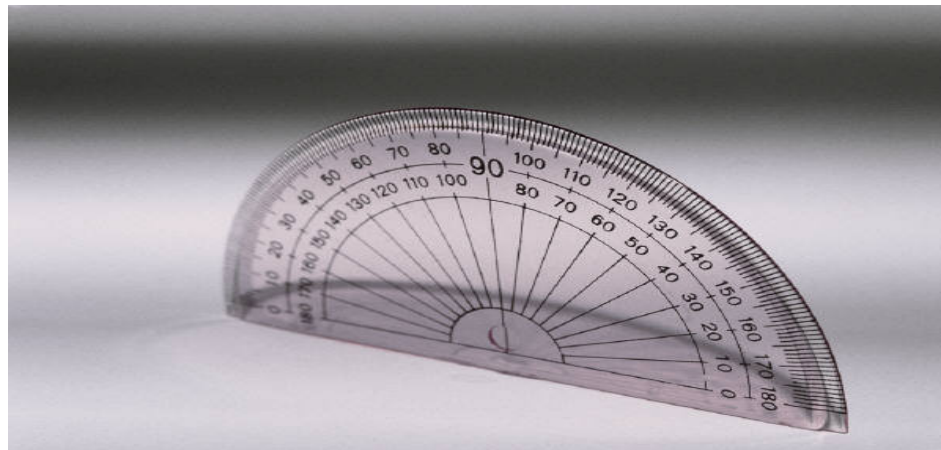
Math at Lincoln Middle School



6th Grade Mathematics

Two Levels of Mathematics Instructions

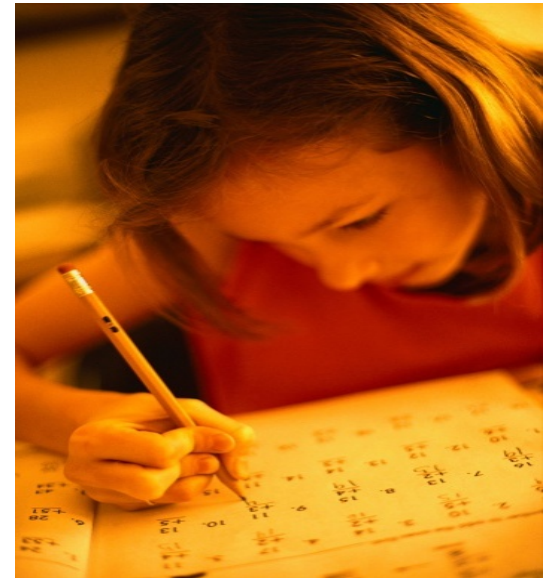
- Course 1
- Math Support Class



7th Grade Mathematics

Three Levels of Mathematics Instructions

- Course 2
- Algebra
- Math Support



8th Grade Mathematics

Three levels of Mathematics Instruction

- Algebra 8
- Geometry 8
- Math Support



Electives at Lincoln Middle School



7th and 8th Grade Elective Programs

1) Math Support/FUSION

- ❑ Placement based on Multiple Measures

3) Trimester Rotation

- ❑ Shop
- ❑ Art
- ❑ Engineering
- ❑ Computers



2) Year Long Programs

- ❑ Band (beginning, intermediate, advanced)
- ❑ Shop
- ❑ Art
- ❑ Yearbook/Journalism
- ❑ Drama
- ❑ Outdoor Development
- ❑ Leadership (application)
- ❑ Teacher's/Office Aide
- ❑ Spanish I (8th Grade Only)
- ❑ French I (8th Grade Only)



Performing in the Lincoln Band



Lifelong Guidelines

Trustworthiness: To act in a manner that makes one worthy of confidence

Truthfulness: To act with personal responsibility and mental accountability

Active Listening: To listen with attention and intention

No Put-Downs: To never use words, actions and/or body language that degrade, humiliate, or dishonor others

Personal Best: To do one's best given the circumstances and available resources

The 18 Life Skills

L I F E S K I L L S

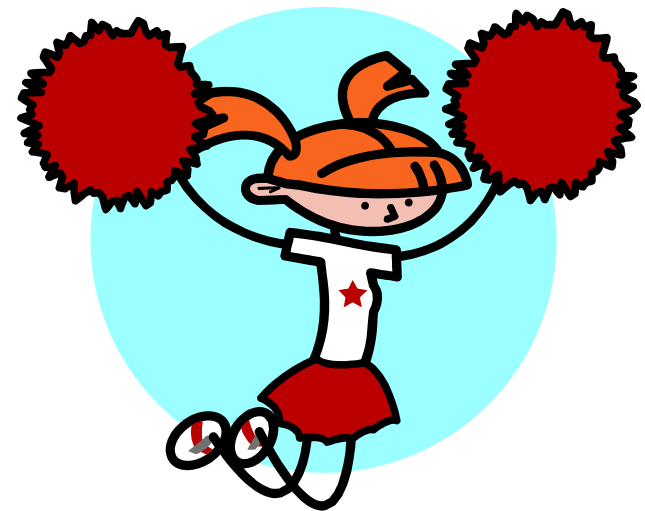
- **INTEGRITY:** To act according to what's right and wrong
- **INITIATIVE:** To do something because it needs to be done
- **FLEXIBILITY:** The ability to alter plans when necessary
- **PERSEVERANCE:** To keep at it
- **ORGANIZATION:** To work in an orderly way
- **SENSE OF HUMOR:** To laugh and be playful without hurting others
- **EFFORT:** To do your best
- **COMMON SENSE:** To think it through
- **PROBLEM SOLVING:** To seek solutions
- **RESPONSIBILITY:** To do what's right
- **PATIENCE:** To wait calmly
- **FRIENDSHIP:** To make and keep a friend through mutual trust and caring
- **CURIOSITY:** To investigate and seek understanding
- **COOPERATION:** To work together toward a common goal (purpose)
- **CARING:** To show/feel concern
- **COURAGE:** To act according to one's beliefs
- **PRIDE:** Satisfaction from doing your personal best
- **RESOURCEFULNESS:** To respond to challenges in creative ways

Social Life at Lincoln Middle School



SOCIAL ACTIVITIES

- **Dances (5 a year)**
- **Spirit Days (Monthly)**
- **Clubs**
 - Juggling
 - Golf
 - Bike
 - Chess
 - Ultimate Frisbee
 - Cheerleading
- **Assemblies**
 - Whole school & lunchtime
 - Anti Bullying Curriculum



AEF Volleyball



AEF Basketball



After School Support

Math Support

- Supports students scoring Far Below Basic to Below Basic on Multiple Measures
- Supports Students to access curriculum while building skill



After School Support

Study Hall

- ❑ Open to entire student population
- ❑ Offers assistance and support in all subject areas
- ❑ One on one assistance

Strategic/EL Support

- ❑ Supports targeted students to increase skill and proficiency in ELA



Enrichment at Lincoln Middle School



MESA



- Mathematics, Engineering, Science Achievement
- A program originated at UC Berkeley more than 30 years ago.
- Hands on curriculum encourages and supports student achievement in Math and Science

MESA at Lincoln



Program Outcomes: 2006-07

MESA served 17,625 educationally disadvantaged students:

- * 12,573 pre-college students in 271 schools at 93 school districts
- * 2,852 community college students at 29 California Community College campuses
- * 2,200 engineering and computer science students at 10 four-year institutions

- 70% of schools participating in MESA have been defined by the state as among the most underperforming in California.¹

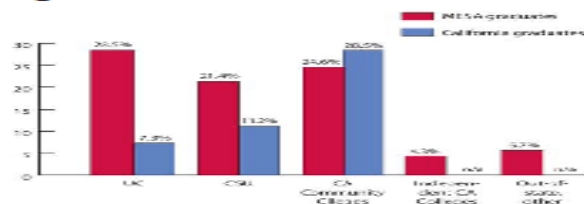
- The number of MESA high school seniors who went to college directly after graduation is higher than the state average.



- The UC eligibility rate for MESA African American, Latino American and American Indian high school seniors is over six times higher than the state average.²



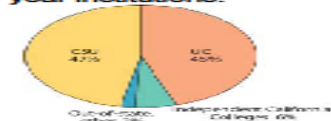
- Most MESA high school graduates went on to higher education in California.³



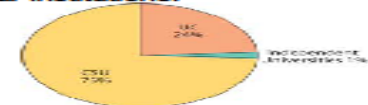
- Of MESA high school graduates, 54% went on to postsecondary education as math, science or engineering majors.

- 98% of MESA community college students transferred to four-year institutions as science, engineering or math majors.

- Most MESA community college students transferred to four-year institutions.



- MESA engineering programs are located across all four-year institutions.



- In 2006-07 MESA leveraged its \$5.2 million in state funds to obtain an additional \$6.05 million from private, foundations and federal sources; \$2.45 million from the California Community College Chancellor's Office, and other matching funds from school districts, individual schools, and higher education campuses.

- California MESA is the model for similar programs in 14 other states, including a national HP community college initiative to increase the number of African American, Latino American, American Indian, and female engineers and computer scientists.

¹ Based on California Academic Performance Index scores, California Department of Education.

² "2003 University Eligibility Study," California Postsecondary Education Commission, 2003. The study did not examine numbers for American Indian students but previous analyses indicate similarly low eligibility rates.

³ California rate from 2007 College-Going Rates to Public Colleges and Universities, California Postsecondary Education Commission (CPEC).

8th Grade Close Up Trip

- Close Up offers inspiring, challenging and fun programs for middle school students and their teachers. Using Washington as a living classroom, they help students experience government "close up" and make a personal connection between history and their own roles as participants in the U.S. democracy. Students do so by completing a series of structured learning activities led by Close Up's highly trained instructors. Teachers who bring students on Close Up qualify to attend our unique teacher program that parallels the student program.



Travel Abroad



Learning by Doing



Preparing for College

- Lincoln Middle School students toured two colleges during the 2009-2010 school year.
- Stanford University
- California State University, East Bay



“Where students are inspired to be the best that they can be.”

School Motto-Lincoln Middle School

